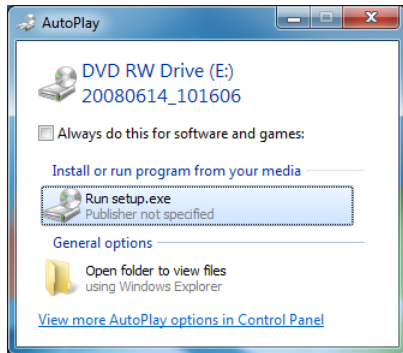
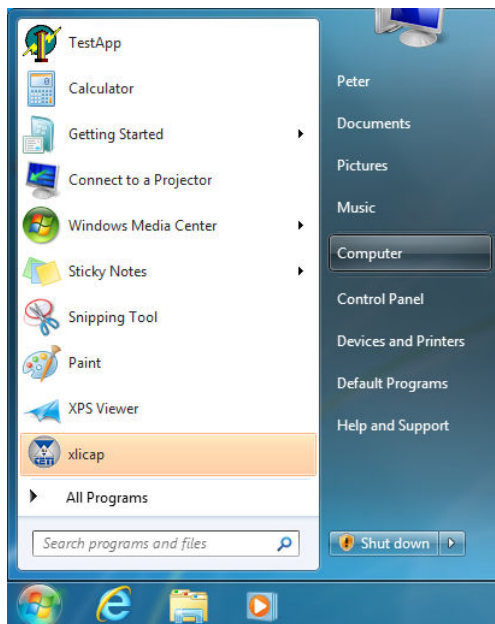


Si-3000 Camera - Windows 7 Installation

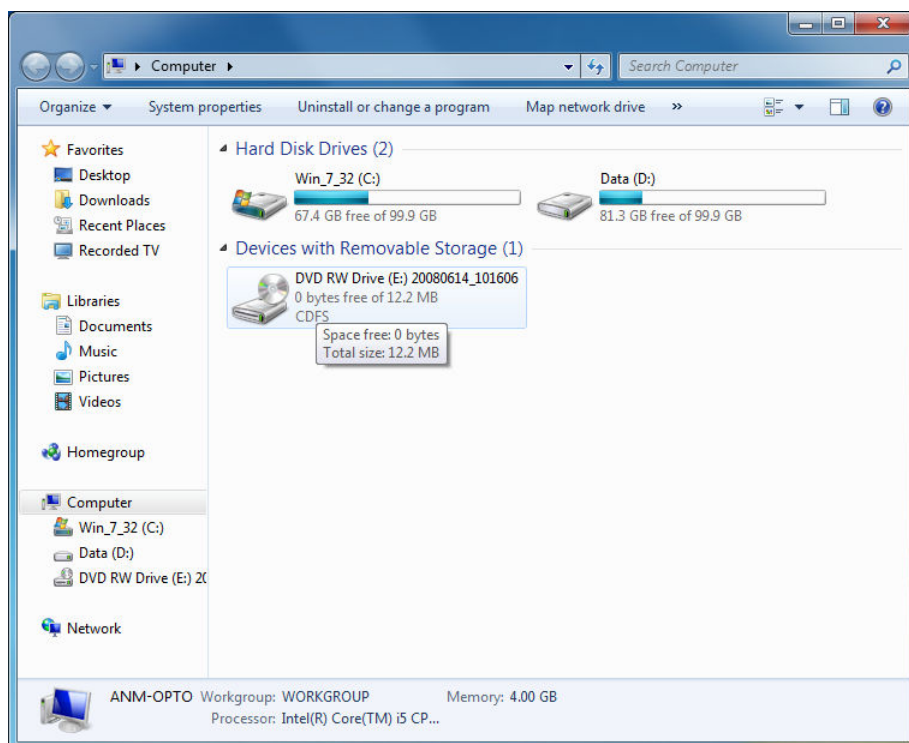
1. Insert the CD in the CD or DVD drive.
2. If the following **AutoPlay** window appears, click on **Run setup.exe**, then go to step 5.



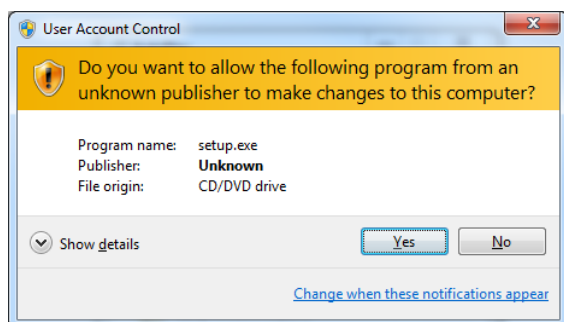
3. If the CD does not auto play then click the Windows Start button, and click on **Computer**.



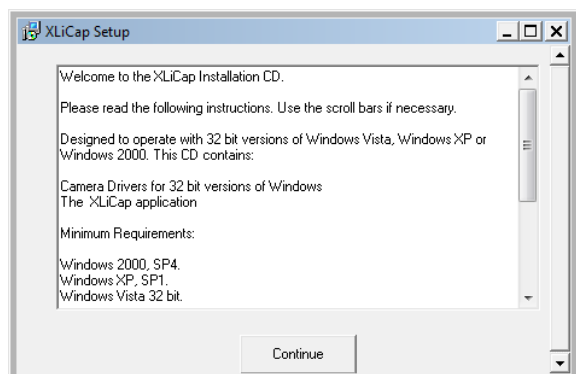
4. The **Computer** window will open like the one below. Double click the **CD** or **DVD** drive to start the installation.



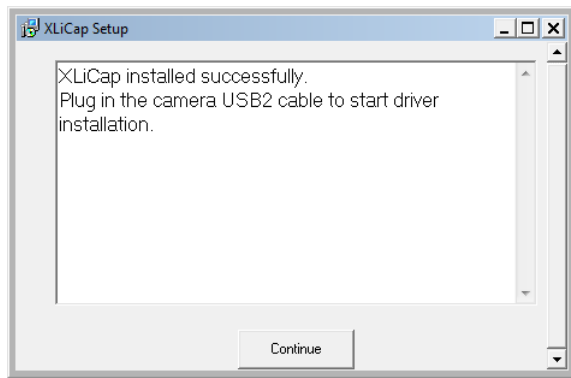
5. If the following **User Account Control** window appears, click the **Yes** button.



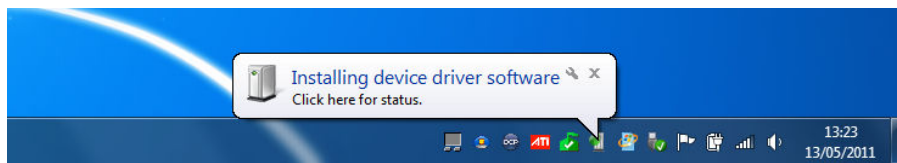
6. An **XLiCap Setup** window will now appear. Click the **Continue** button.



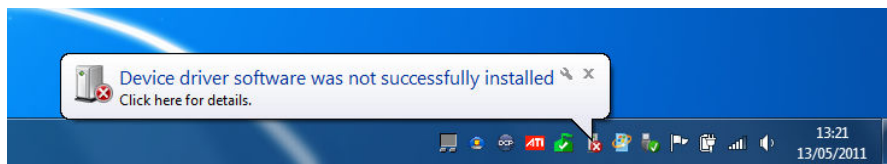
7. The software will install and will display the following window when complete. Click the **Continue** button to close the window.



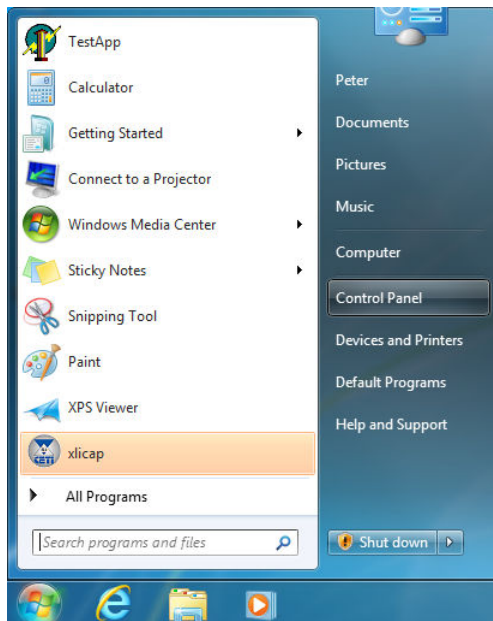
8. Connect the Si-3000 camera to a free USB 2.0 port. The following message will briefly appear above the Taskbar Notification area in the bottom right hand corner of the screen.



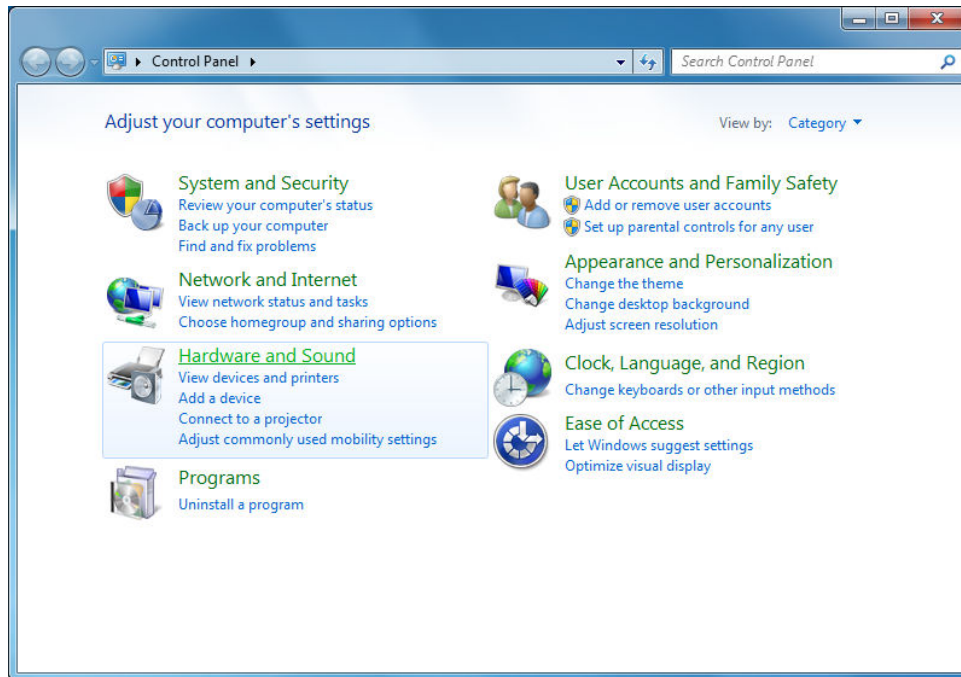
9. The above message will then be replaced by the message below. Don't worry. This is normal because Windows 7 cannot install the Si-3000 driver automatically.



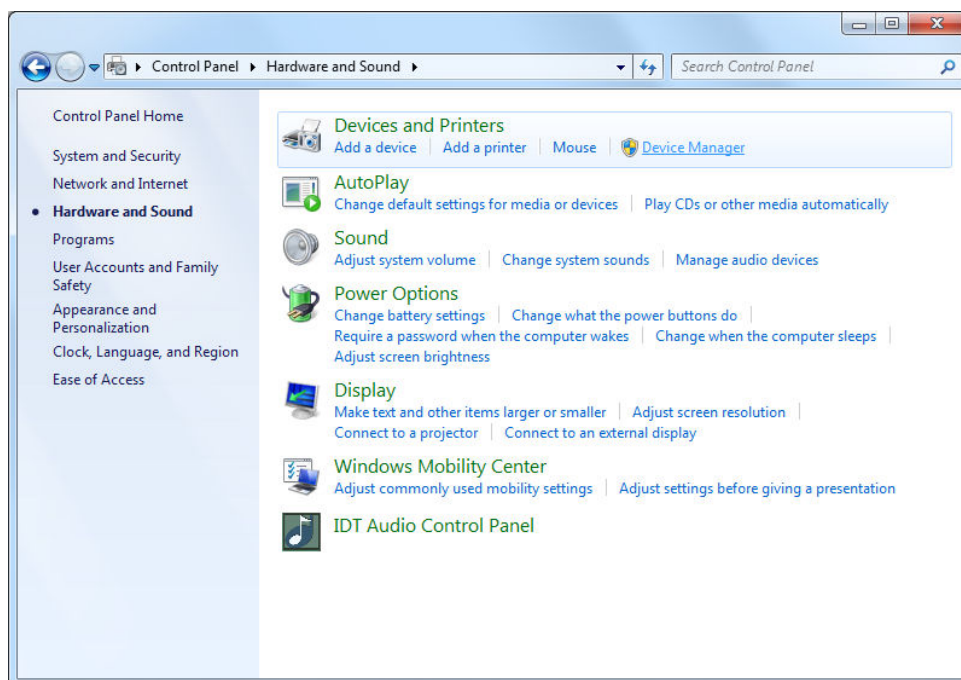
10. To install the driver manually, first click on the Windows Start button, and then click on **Control Panel**.



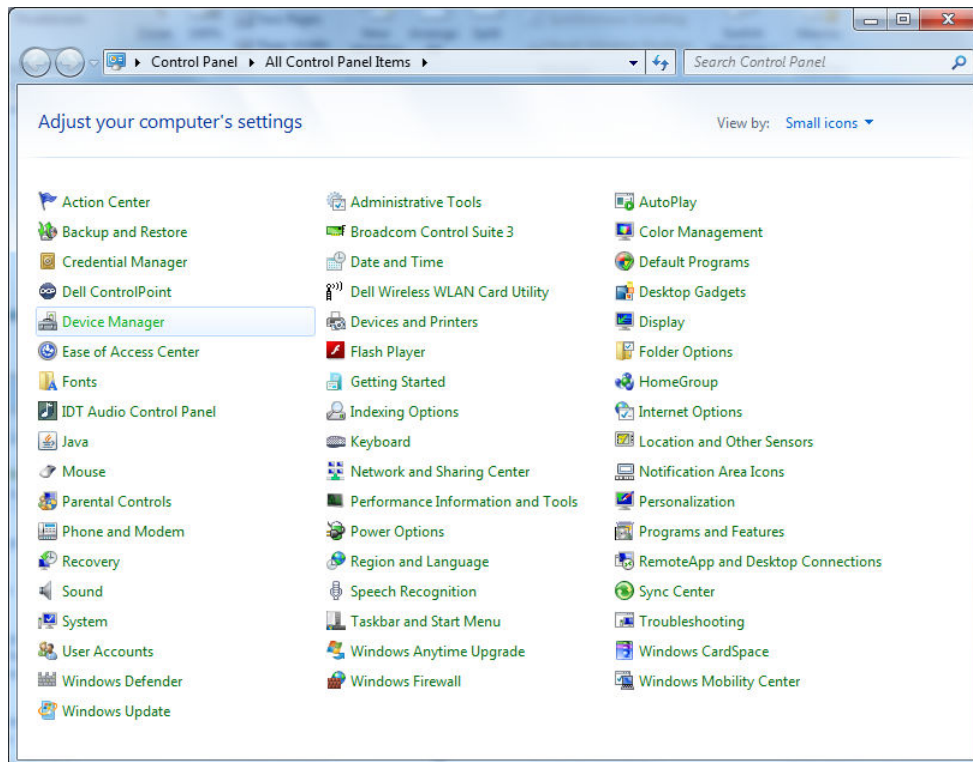
11. If the control panel is in the default format shown below, click on **Hardware and Sound**. If it is in a list format, go to step 13.



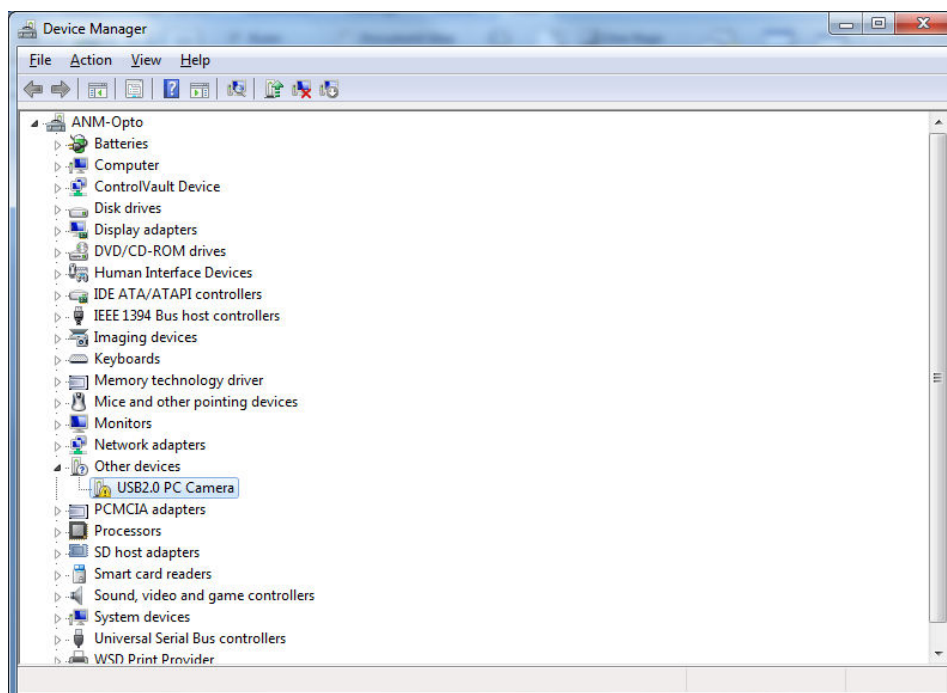
12. The control panel will display the options below. Click on **Device Manager**, then go to step 14.



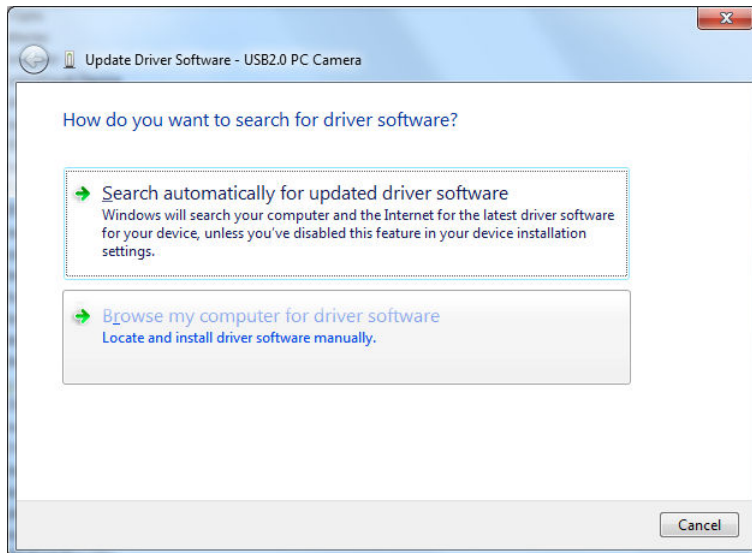
13. If the control panel is in list format as below, click on **Device Manager**.



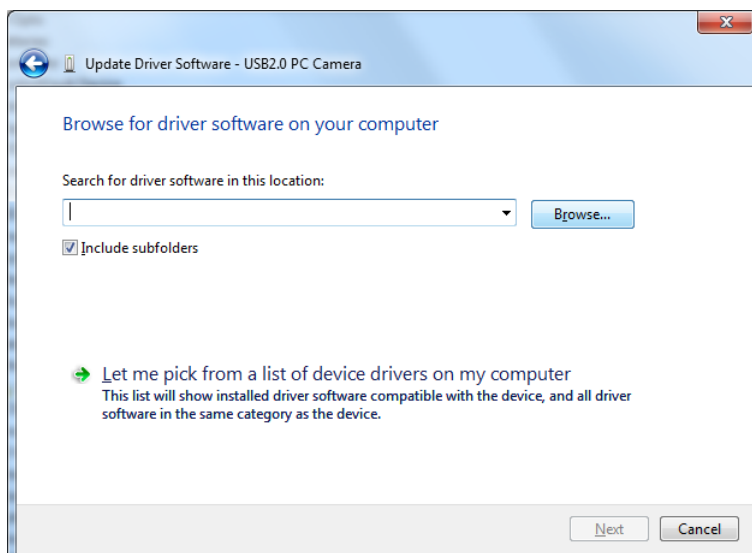
14. The **Device Manager** window will open looking like the following. Locate the **USB2.0 PC Camera** entry, right click on it and select **Update Driver Software...**



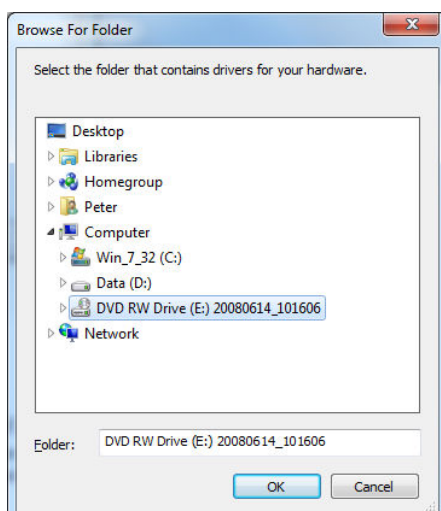
15. The following **Update Driver Software** window will open. Click on **Browse my computer for driver software**.



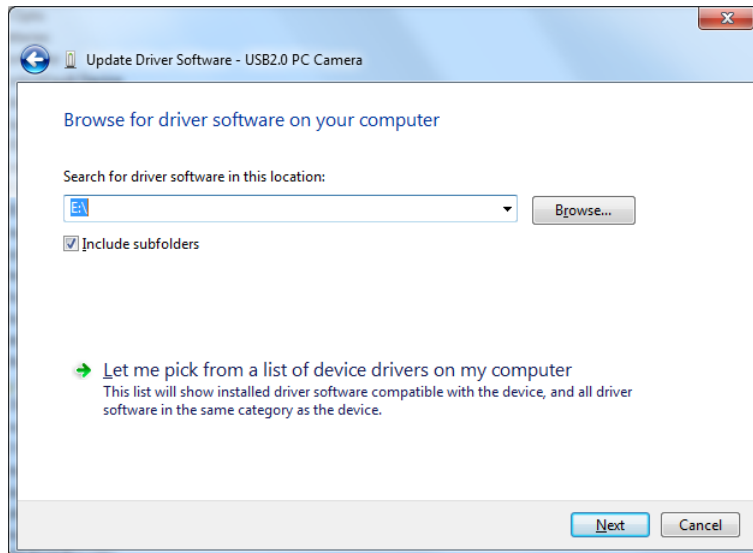
16. The window will change to the following. Click the **Browse...** button.



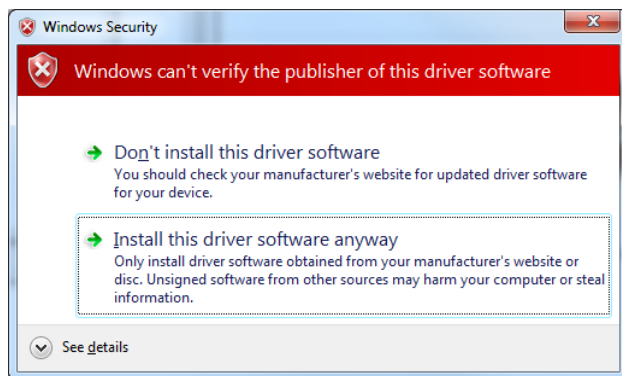
17. A **Browse For Folder** window will open. Scroll down the list to locate the **Computer** entry. If the drives are not listed then double click on **Computer** to list them. Click on the **CD** or **DVD** drive, and then click the **OK** button.



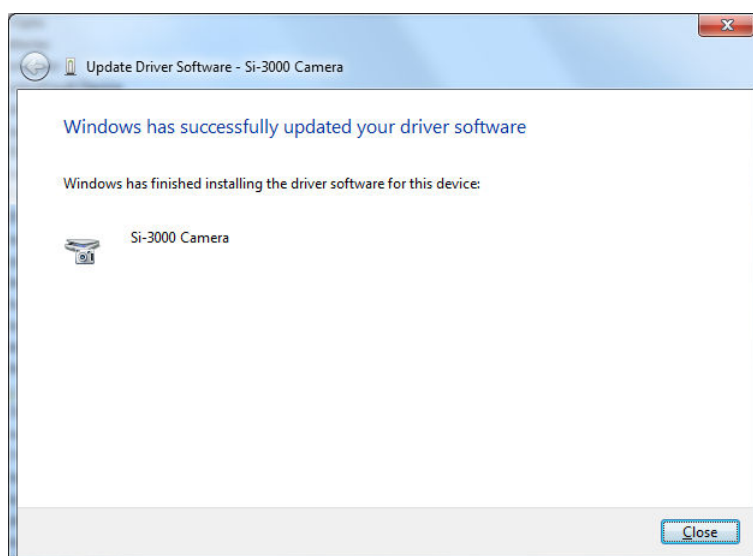
18. You will be returned to the **Update Driver Software** window where the CD or DVD drive letter will be highlighted in the box. Click the **Next** button.



19. Windows will start the installation process, but after a while will display the following **Windows Security** warning. Click on **Install this driver software anyway**.



20. The installation will continue, finally displaying the confirmation message below. Click the **Close** button.



21. The **Control Panel** and **Device Manager** windows may now be closed.
22. The installation is now complete and your camera is ready to use.